

### Discover What's Inside

Collections Corner, New Name Unveiled, Mission Related Efforts & More.



**REOPENING AND REBRANDING**  
PAGE 2



**CHECK OUT OUR UPCOMING EVENTS**  
PAGE 4



**NEW EXHIBITS AT SHM**  
PAGE 5



# Southold Historical Museum

PROMOTING INTEREST IN AND EDUCATION ABOUT THE HISTORY OF SOUTHOLD

## From the Executive Director

What a summer! Beginning with a tremendous kick-off, the season has continued with remarkable success. Have you had the opportunity to explore the new exhibits at the Maple Lane Complex and the Nautical Museum at Horton Point Lighthouse? Or have you stopped into the Treasure Exchange, either to shop or to drop off donations? The Museum Gift Shop has been buzzing as well, with sales of local history books and gift items. After being closed for so many months, the energy of volunteers, visitors, and shoppers is most welcome!

As we move into autumn, we often transition into programs and small group activities. This year will be no different, though there is still some uncertainty. The perennial favorite, Step Back in History Week, is scheduled for October, and we hope conditions will be favorable for this to take place as planned. Educating our young people about the rich local history is a vital component of our mission as a museum.

We look forward to seeing you throughout the upcoming months. We are still looking for volunteers in our shops and on some of our standing committees, Please reach out if you would like to learn more or if you have any suggestions for new initiatives.

Best,

*Seanna Wittl-Walker*



**Right: Picture Collage of Scenes from Wine by the Vines, Reopening Celebration and the Southold Town 4th of July Parade.**

## REOPENING AND REBRANDING!



**L - R State Assemblywoman Jodi Giglio, Town Government Liaison Denis Noncarrow (also representing State Senator Anthony Palumbo), County Legislator Al Krupski, Board President Janet Larsen, Executive Director Deanna Witte-Walker, Logo Designer Sean Cleary, County Cultural Affairs Program Coordinator Erin Reyes**

Southold Historical Museum (formerly Southold Historical Society) reopened with a new name, a new logo and a weekend filled with visitors exploring its three historical locations filled with artifacts. A special "What's Old Is New Again" ceremony was held on July 1 to unveil the new direction for the museum. Attendees got a preview of the new sign and logo and were invited to explore the grounds and preview this summer's new exhibits. For more details on the new exhibits see pages 5 and 6.

The fun continued all weekend with a behind the scenes look at the new Henry and Caroline Elfers Collections Center on Friday as well as a brick dedication on Saturday. Despite the rainy weather, we welcomed many smiling faces to our museum locations. The Maple Lane Complex and Nautical Museum at Horton Point Lighthouse kicked off the season with much success as volunteers greeted visitors on both Saturday and Sunday. Thank you for embracing the old and the new.



**The winning logo for Southold Historical Museum, designed by Sean Cleary.**



1961 Southold Town Clerk's Office

## Collections Corner: Facebook

This image was featured in our Collections Corner and was our most popular Facebook post this quarter. Here at SHM, we love data! This post received a distribution score that was 2.8 times higher than average...meaning this post got a lot of love from our audience!

About the picture: At one point, the town offices were located in multiple buildings across Southold town. This building was originally built in 1871 as the Presbyterian Chapel on the Main Road in Southold. In the 1960s, it was the Southold Town Clerk's office. The building was moved around the time when the Southold Town Hall was built (circa 1976). It is now situated on Travelers Street, east of Southold Post Office.



### COOL TECH FACT!

54% of users access our website using a smart phone. Scan the QR code above using the camera on your smart phone to see what page they visit most often!

# What Are We Up to at SHM?



Guests enjoying the mini-lecture "Ever Wonder What It Is Like to Live at a Lighthouse?" by speaker Mary Korpi.

### MISSION RELATED AND COMMUNITY EFFORTS

- New Exhibits - Southold Historical Museum is proud to announce that we reopened the 2021 season with an array of new exhibits to explore. See pages 5 and 6 for more information!
- Lecture Series - Southold Historical Museum offered a series of "mini-lectures" this summer season at Horton Point Lighthouse. With a nautical museum housed inside the lighthouse, the museum decided to broaden the perspective by offering talks which are centered around a maritime theme on the front porch and lawn. Topics included: "Ever Wonder What It Is Like to Live at a Lighthouse?," "Shipwrecks of Dead Man's Cove," "Rum-Running off Horton Point," "Cool Animals of Long Island Sound." Many thanks to the speakers who donated their time to share their knowledge with an enthusiastic audience.
- 10 Squared Art Sale "Summer Solstice"- The online exhibition and art sale went live on the summer solstice, June 20, 2021, at 9am. Art enthusiasts started the sale fast and furious with 39 pieces of art sold on the first day. Overall, we sold a record 56 pieces of art. Incredible! Thank you to all who participated.

## What Have We Been Up to at SHM? (continued)

### EVENTS AND FUNDRAISERS

- Wine by the Vines - It was a beautiful afternoon filled with sunshine, friends, and fun at Pellegrini Vineyards. Thirty-five members and guests enjoyed a light meal, wine, and a personal tour of the bottling facility at Pellegrini Vineyards.
- Annual Yard Sale - Crowds turned out for the Annual Yard Sale which was held at the Prince Building on June 19. It was a huge success! Many thanks to the volunteers who donated, worked and supported the museum.
- Summer Socials - Generous board members and volunteers once again offered their homes and gardens to host Summer Socials to benefit the museum. We appreciate their hospitality and warm welcome and thank all of those who attended.
- Summer Raffle - Stay tuned for the announcement of the winners. The drawing will be September 12, and winners will be contacted. SHM members are some of our most faithful participants in this fundraiser. Thank you.
- Treasure Exchange - When the pandemic hit last spring, like other shops, the Treasure Exchange had to shutter its doors. The museum took the opportunity to work with our volunteers to reimagine the space. Much to the delight of our Treasure Exchange fans, the newly reformatted shop reopened on July 1st, 2021. All of the merchandise being offered has been donated so that all proceeds will be retained by the museum. **Looking to donate items for our shop? For a list of items we are seeking, please visit the Treasure Exchange page on the museum website.**
- Antique, Fine Art and Crafts Fair - Southold Historical Museum once again partnered with the Old Town Arts and Crafts Guild to present the Annual Antique, Fine Art and Crafts Fair on July 24 and 25, 2021. The annual fundraiser which supports both non-profits organizations has been a beloved summer favorite since 2016. The historic grounds coupled with the wide variety of vendors created a superb event.

## UPCOMING EVENTS

### October 4-8, October 12 - Step Back in History Week

Education Committee volunteers welcome students to the museum locations to acquaint them to the area's rich history and to familiarize them with our collection of artifacts and buildings.

### October 21 - Wine by the Vines at Pellegrini Vineyards 3pm - 5pm

Guests will be welcomed to the beautiful patio of the Vineyard overlooking some of their oldest vines. A choice of several Pellegrini wines, gourmet sandwiches, and petite sweets will be served in a setting that is comfortable for socializing. Non-alcoholic beverages will be available as well. Cost: \$50 per person. Tickets can be purchased on our website.

### November 4- Harvest Dinner at O'Mally's Restaurant 12pm - 8pm

If it is Fall, then it is time for Southold Historical Museum's Harvest Dinner. Celebrate the season with delicious food and friendly company. O'Mally's Restaurant offers a complete dinner for this special occasion which includes salad, entrée, coffee or tea, and dessert. Takeout is available for those who cannot stay. Tickets are \$35.00 which includes gratuity. Call 631-765-5500 for more information or to purchase tickets.

### November 26 - Candlelight Tour at the Maple Lane Complex 3pm - 6pm

Join us at the annual Candlelight Tour, a delightful way to start the celebration of the holiday season. This is a magical time for our members, their families and the Southold community to come together to have some good old-fashioned fun.

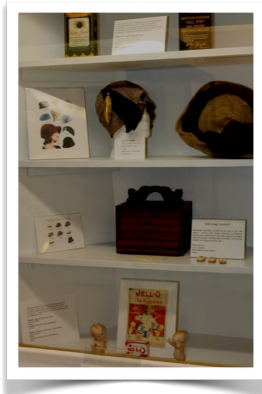
Admission is free; donations accepted. The Museum Christmas Tree will be lit at 5pm.

### December 4 - Holiday Fair at Peconic Recreation Center 9am - 4pm

It is with great pleasure that Southold Historical Museum announces its annual Holiday Fair. A great variety of vendors and talented local artisans will be on hand with unique holiday gifts for all. The "Holiday Auction" will feature gift baskets for all ages. There will be a bake sale, snacks as well as a crafts room for children. Families with children won't want to miss a visit with Santa who will be on hand to greet children from 11am-2pm. Photos with Santa and admission to the event are free.

## NEW EXHIBITS AT SHM!

### The Roaring 20s: A Decade of Change



This exhibit explores local living 100 years ago, including the temperance movement, rum-running and speakeasies as well as lifestyle changes. People, disillusioned with conservative traditions and by the horrors of the past war, drove fast cars, wore fashionable clothes and cosmetics, partied, danced the Charleston, drank alcohol despite Prohibition, and added many slang terms to the language. Individualism and Consumerism developed at this time.

**Located at the Ann Currie-Bell House at the Maple Lane Complex.**



### Quilt Display



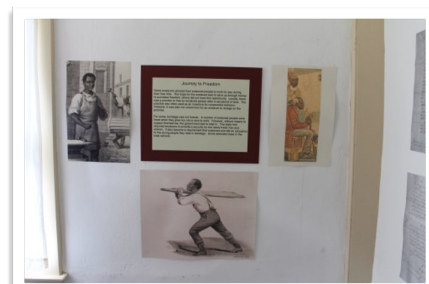
These quilts highlight the extensive textile collection of the museum. In addition to a quilt that was sewn during the Civil War era, there is a quilt to support the temperance movement as well as one by skilled milliner, Frank Davis Smith of Peconic. Smith was born on March 21, 1862, in Peconic, New York, to Joshua (1824 -1887) and Lucinda Terry (1829-1925). He married Minnie Esther Terry on August 2, 1900, in Southold, NY. Frank owned a millinery shop in Peconic. This quilt, made from silk and velvet scraps of his hat fabrics, was hand pieced by him shortly before his death at age 80.

**Located at the Ann Currie-Bell House at Maple Lane Complex.**

### Enslavement in Southold

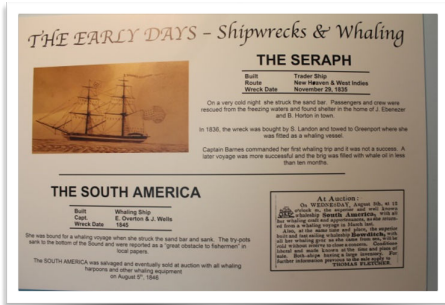
The reinterpretation of the permanent "Enslavement in Southold" exhibit examines the institution of slavery in Southold and identifies five people who are documented as being enslaved by the Landon Family in the mid to late 1700s. The reinterpretation involved integrating the narrative of the enslaved people within the daily lives of the family. Parts of the house offer a continuous story of the historic house.

**Located in the Thomas Moore/Samuel Landon house at the Maple Lane Complex.**



# NEW EXHIBITS AT SHM! (continued)

## Dead Man's Cove: Shipwrecks off Horton Point Lighthouse



“Dead Man’s Cove: Shipwrecks off Horton Point Lighthouse” explores the history of the treacherous waters just beyond Horton Point that necessitated the building of the lighthouse there. The sand bars and large boulders have led to a number of shipwrecks over the years. It was curated by volunteer Ben Gonzalez with assistance from Amy Folk, museum collections manager.



**Located at the Nautical Museum at Horton Point Lighthouse.**

## Colonial Herb Garden

The Colonial Herb Garden has been updated to include interactive labels to identify and explore the various herbs. By scanning the QR codes with a smartphone, visitors can learn about the various uses of the herb throughout history.

**Located on the grounds of the Maple Lane Complex.**



## New Interpretive Signage

The Reichert Family Barn has new interpretive labels that offer names and uses of various artifacts that are on exhibit throughout the barn. The extensive sleigh collection, which is exhibited on the upper bays are now easier to identify, as well as the carriages that are on display throughout the barn and annex.

The new outdoor interpretive signs at the Maple Lane Complex, funded by a grant through Suffolk County Parks, help visitors learn more about the numerous buildings as they walk the beautiful grounds. These signs offer some basic information about the historic buildings, including some historic photographs.



**One of the new interpretive labels in the Reichert Family Barn**

NAME: \_\_\_\_\_

PHONE #: \_\_\_\_\_

This puzzle is a word search puzzle that has a hidden message in it. First find all the words in the list. Words can go in any direction and share letters as well as cross over each other. Once you find all the words. Copy the unused letters starting in the top left corner into the blanks to reveal the hidden message.

**MAIL COMPLETED PUZZLE FOR A CHANCE TO WIN A \$25 AMAZON GIFT CARD DONATED BY PECONIC ENERGY CORP.**

T S O U T H M E O H T L D S S H I S T L  
 R O R I C U A G L H E L S U O O C I O E  
 A T Y I S S N A G O W R S M O U C G T H  
 O L D E H E I I I N S T B M O R O I I C  
 A L U M D N L R U S I T E E U M O F A L  
 E M G A O E V R P D E N S R I B W S F L  
 C V C L L O T A S R R N N E S G W Z U I  
 H E O D N S L C U T O A D U V S D U N N  
 D C N C H E H S T I I N Y H R R N P D T  
 E A I S C F A I T I S B Y E I M A E R E  
 C M D T O E L A P E U Q I T N A U H A R  
 C E U L R L N X F W I T K H E I C R I P  
 O R N T O O S A Q M R H I G X I V K S R  
 E T G T D H I T S H G E N B R E T A E E  
 V Q I F N R T U I A O A C O A R M S R T  
 E P S G R X C U R C H L T K S R R W I I  
 Y S F J Z I R D O C E S I C J E N E K V  
 V A M D J X E X X S I G Q D F C P V P E  
 H A P F J N B E L H Z E V L A I Y S Q M  
 Q U I L T W L N X A Z U E P A Y T D Z O

- |             |              |          |
|-------------|--------------|----------|
| ANTIQU      | ART          | BARN     |
| CANDLELIGHT | CARRIAGE     | COLONIAL |
| COVE        | DECADE       | DONATION |
| ELFERS      | EXCHANGE     | EXHIBITS |
| FAIR        | FUNDRAISER   | GARDEN   |
| HARVEST     | HERB         | HISTORIC |
| HOLIDAY     | INTERPRETIVE | LECTURE  |
| LOGO        | MUSEUM       | QUILT    |
| RUMRUNNING  | SHIPWRECK    | SIGN     |
| SOCIAL      | SOLSTICE     | SOUTHOLD |
| SUMMER      | TREASURE     | VINEYARD |

-----  
 -----  
 -----  
 -----!

# Southold Historical Museum

54325 Main Road  
PO Box 1  
Southold, NY 11971

T: 631-765-5500

E: [info@southoldhistorical.org](mailto:info@southoldhistorical.org)

W: [www.southoldhistorical.org](http://www.southoldhistorical.org)

**Museum Office: Mon. - Fri. 10am - 2pm**

**Gift Shop: Mon. - Fri. 10am - 2pm**

**Treasure Exchange: Thurs. - Sat. 10am - 4pm**

**(Donations accepted Wed. - Fri. 10am - 2pm)**

**There is a suggested admission of \$5 per adult and \$10 per family which includes admission to both locations.**

**Maple Lane Complex  
55200 Main Rd., Southold  
Sat. and Sun. from 1- 4pm through September 12**

**Nautical Museum at Horton Point Lighthouse  
3575 Lighthouse Rd., Southold  
Sat. and Sun from 11:30am - 4pm through September 12**

*Parking is available at Horton Point Lighthouse for a fee through the Southold Park District.  
Street parking is with a Southold Town Permit only. The Lighthouse Tower is temporarily closed.*

## Board of Trustees

Janet Larsen, President  
Elizabeth Barratt, 1st Vice President  
Paul Edelson, 2nd Vice President  
Jay Cardwell, Treasurer  
Sara Evans, Asst.Treasurer  
Margaret "Lee" Cleary, Secretary  
Herb Adler, Jr.  
John Barnes  
Caroline MacArthur  
Rosemary McKinley  
Joel Reitman  
Larry Rubin  
Marie Scalia  
Mickey St John  
Barbara Strokoff

## Business Sponsor



## Staff

Deanna Witte-Walker, Executive Director  
Amy K. Folk, Manager of Collections  
Rachel J. Johnson, Museum Administrator  
Walter R. Jackson, Office Assistant  
Ed Forte, Bookkeeping  
Kristen Matejka, Marketing Liaison